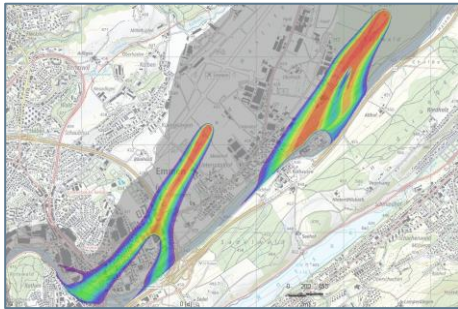


When prediction reliability is decisive
The PLUS in expertise

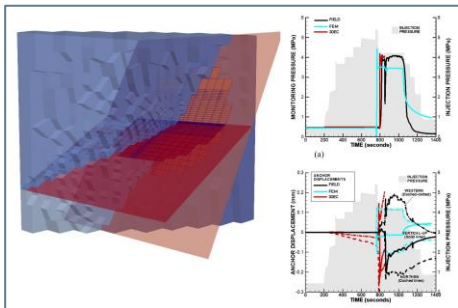
The PLUS in expertise

The collection of reliable geotechnical and hydrogeological parameters is based on an integral consideration of all project parameters. This is why clients and design engineers call on Polymetra's expertise right from the conception, planning and execution of exploration campaigns. By means of interdisciplinary analysis and well-founded practical experience, Polymetra's experts produce reliable results with the highest degree of prediction reliability and decisive economic benefits.



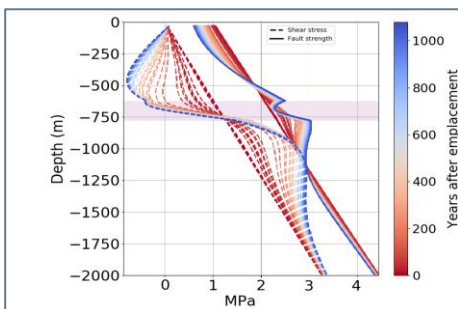
Consulting services

- technical consulting on all aspects of borehole testing campaigns
- Conception, planning, site supervision, QA
- hydrogeological, geotechnical, seismic and engineering-geological consulting
- 3D numerical modelling, characterisation and parameterization, geotechnical dimensioning
- risk analyses, planning of measures / interventions



Area of expertise

- Underground infrastructure and mining, tunnels, caverns
- Subsoil, foundations, slope stabilisation
- Natural hazards, mass movements, landslides
- Well construction, water supply, drainage
- Dams and reservoirs
- Large-scale geothermal energy drilling
- Waste disposal, landfills, contaminated sites
- Deep repositories, rock laboratories



Solutions from a single partner

- smart, practice-oriented solutions thanks to multi-disciplinary expert knowledge and sound project experience.
- Specialists from the fields of hydrogeology, environment, geotechnics, civil engineering, measurement technology
- Interfaces under control - from conception, planning, execution and analysis down the line to 3-D modelling
- efficient solutions for decisive cost reductions

Customised consulting expertise. specific. resilient. budget-friendly.



Let's talk about solutions.
Dr. Marc Pesendorfer will be happy to support you.

Monitron AG Polymetra
CH-8500 Frauenfeld
Tel +41 44 825 0555 / +41 79 967 7670
info@polymetra.ch / www.polymetra.ch

POLYMETRA
EXPERTS FOR WELL TESTING